

Madison, Wisconsin

INDEX OF SHEETS

SHEET NO.	NOTES AND DETAILS
D1-D3	NOTES AND DETAILS
P1	STREET PLAN & PROFILES
U1	UTILITY PLAN & PROFILES
U2	STORM SEWER SCHEDULE
E1-E3	ELECTRICAL PLANS
PM1	PAVEMENT MARKING PLANS
MN1	MAINTENANCE MAP

CITY OF MADISON

CITY ENGINEERING DIVISION

DEPARTMENT OF PUBLIC WORKS

PLAN OF PROPOSED IMPROVEMENT

W MAIN ST BIKE BOULEVARD

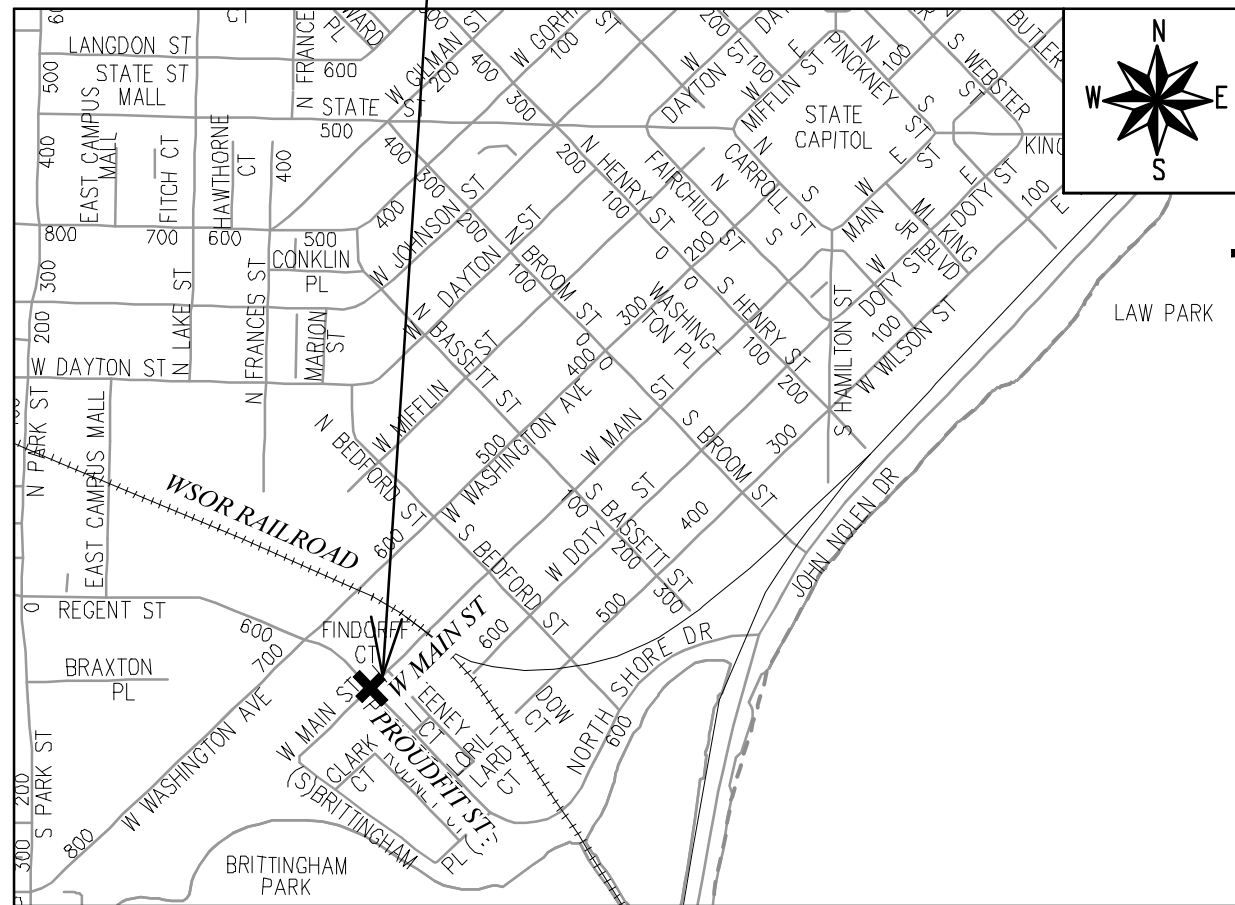
(FEDERALLY FUNDED)

CITY PROJECT NO. 13015

CONTRACT NO. 8721

WISDOT CONSTRUCTION ID 5992-00-66

PROJECT LOCATION



CONVENTIONAL SIGNS	
FIELD VERIFY ALL UTILITY LOCATIONS	
GAS	— G —
STORM SEWER	— ST —
SANITARY SEWER	— SAN —
WATER	— W —
BURIED ELECTRIC	— E —
OVERHEAD ELECTRIC	— OH —
POWER POLE	
ADA COMPLIANT RAMP W/ DETECTABLE WARNING FIELD	
COMBUSTIBLE FLUIDS	

NOTES:

ALL GUTTERS SHALL DRAIN WITH A MINIMUM GRADE OF 0.50% TOWARD STORM SEWER INLETS.

SIDEWALK RAMPS SHALL HAVE A MAXIMUM SLOPE OF 1" PER 12". SIDEWALK AND CURB RAMPS SHALL BE CONSTRUCTED WITH A SIDE SLOPE OF 2.00%. SIDEWALK SHALL HAVE A MINIMUM LONGITUDINAL SLOPE OF 0.50% AND A MAXIMUM LONGITUDINAL SLOPE OF 5.00% EXCEPT WHERE STREET GRADES EXCEED 5.00%.

EARTHWORK SUMMARY:

EXCAVATION CUT (MEASURED PLAN QUANTITY).....	120 CY
ESTIMATED UNDISTRIBUTED UNDERCUT.....	10 CY
TOTAL UNCLASSIFIED EXCAVATION CUT.....	130 CY

PUBLIC IMPROVEMENT PROJECT APPROVED

SEPTEMBER 6, 2022

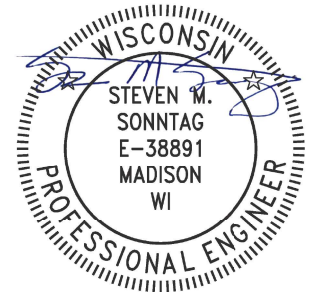
BY THE COMMON COUNCIL OF MADISON, WISCONSIN

PUBLIC IMPROVEMENT DESIGN APPROVED BY:

Mar 28, 2023

City Engineer Date

STREET DESIGNED BY:



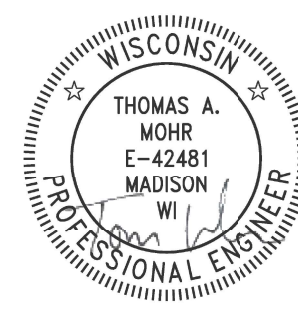
Mar 29, 2023

STORM SEWER DESIGNED BY:



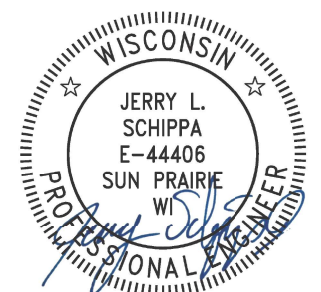
Mar 28, 2023

STREET GEOMETRICS & PAVEMENT MARKINGS DESIGNED BY:



Mar 28, 2023

ELECTRICAL DESIGNED BY:



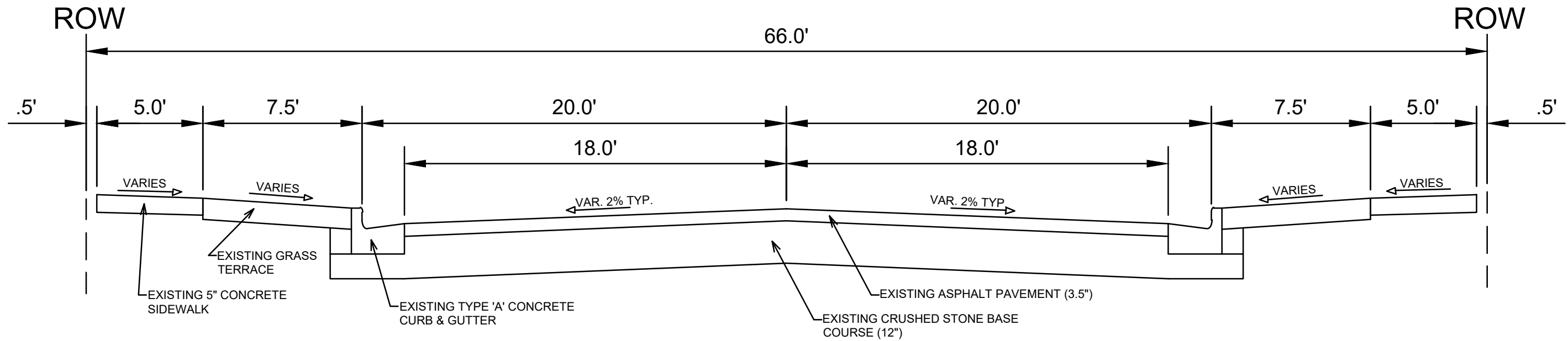
Mar 28, 2023

PLOT SCALE: 1 IN = 1 F_XREF

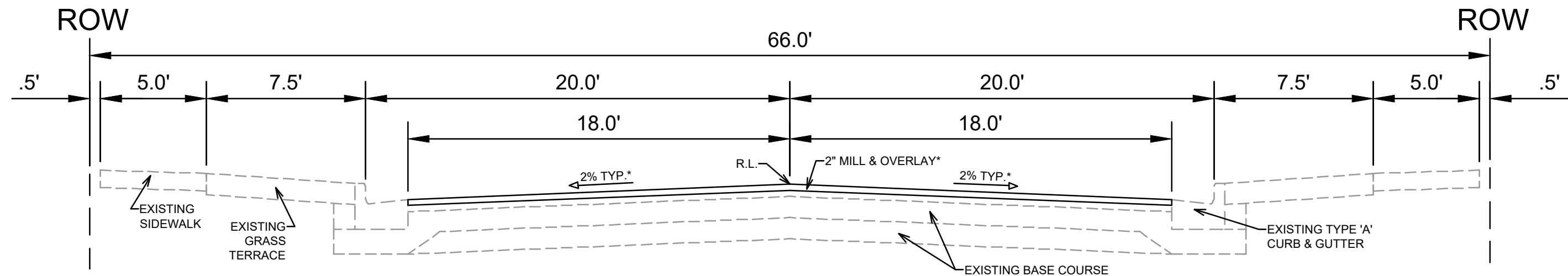
PLOT NAME: ---

REV. DATE: 3/3/2023 3:48 PM

ORIGINATOR: CITY OF MADISON



EXISTING TYPICAL SECTION
W MAIN ST
(PROUDFIT ST)



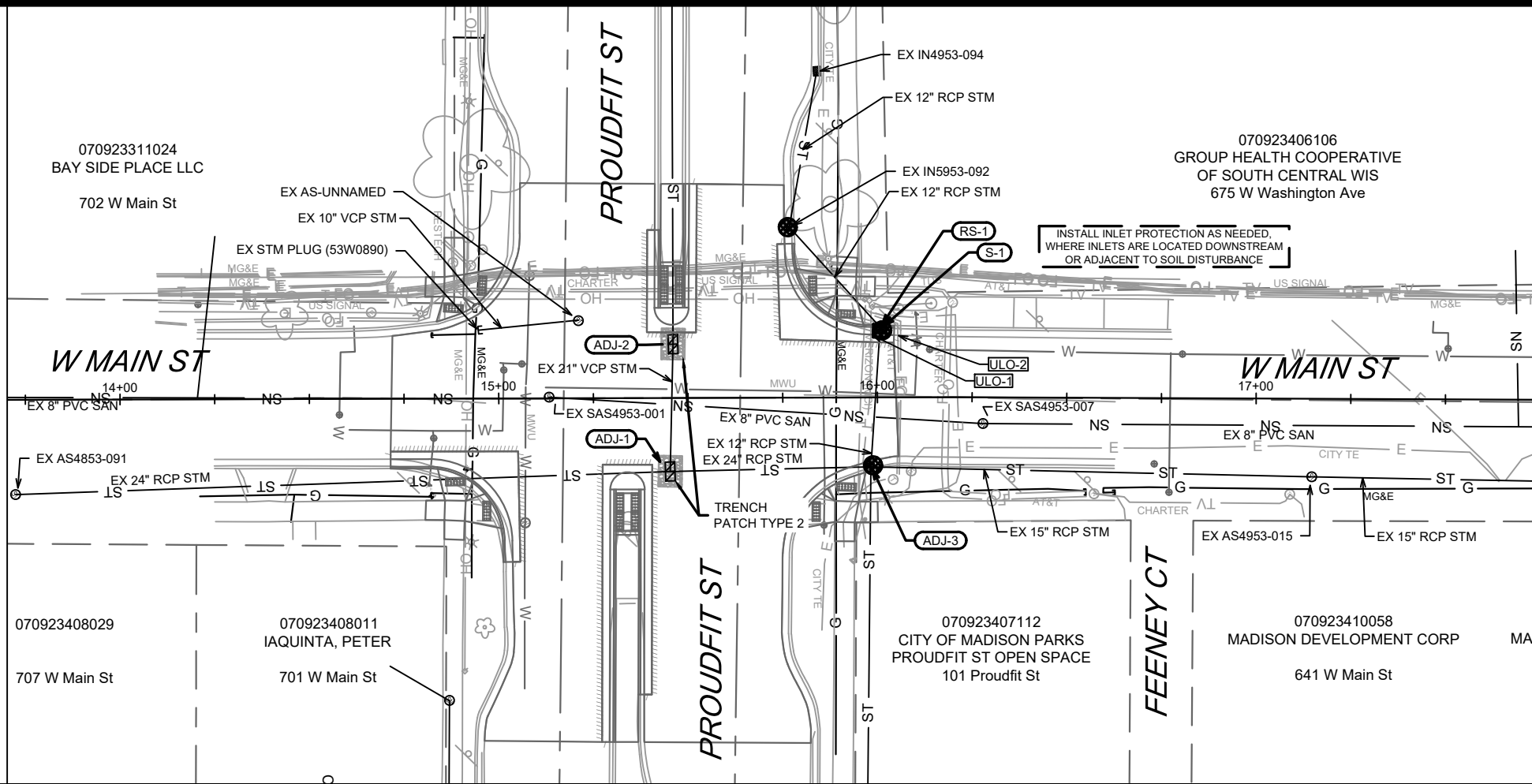
FINISHED TYPICAL SECTION
W MAIN ST
(PROUDFIT ST)

MARK	REVISION	DATE	BY
13015		3/2/2023	
Design: AJC	Date: 3/2/2023	Time: 1:02 PM	Scale: #####
13015			D-1

13015
 MADISON, WI
 CONTRACT NO: 8721

EXISTING TYPICAL SECTIONS
 W MAIN ST BIKE BOULEVARD
 M:\DESIGN\Projects\13015\CAD\Streets\13015EN-Details.dwg





MATCH LINE 17+75.00

EROSION CONTROL NOTES:

EROSION CONTROL MEASURES SHALL BE IN PLACE PRIOR TO ANY OTHER CONSTRUCTION ACTIVITY.

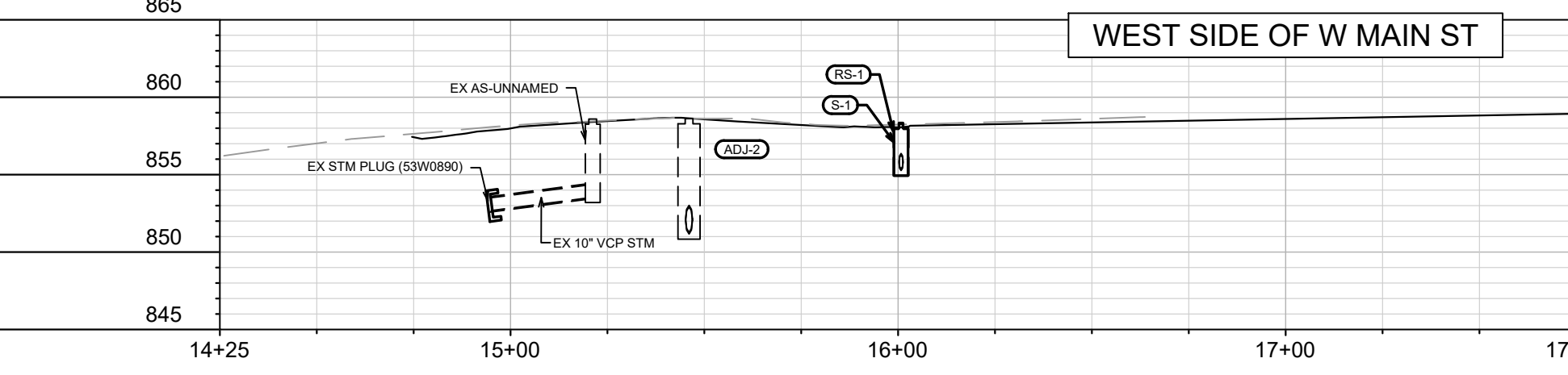
THE CONTRACTOR IS RESPONSIBLE FOR THE CONSTRUCTION AND MAINTENANCE OF ALL EROSION CONTROL MEASURES UNTIL FINAL ACCEPTANCE BY THE CITY OF MADISON.

THE CONTRACTOR SHALL INSTALL AND MAINTAIN EROSION CONTROL MEASURES IN ACCORDANCE WITH TEH WDNR SOC STANDARDS AND CITY OF MADISON STANDARD SPECIFICATIONS.

THE CONTRACTOR SHALL PROVIDE STREET CLEANING AS NEEDED ON A DAILY BASIS TO KEEP TRACKING TO A MINIMUM.

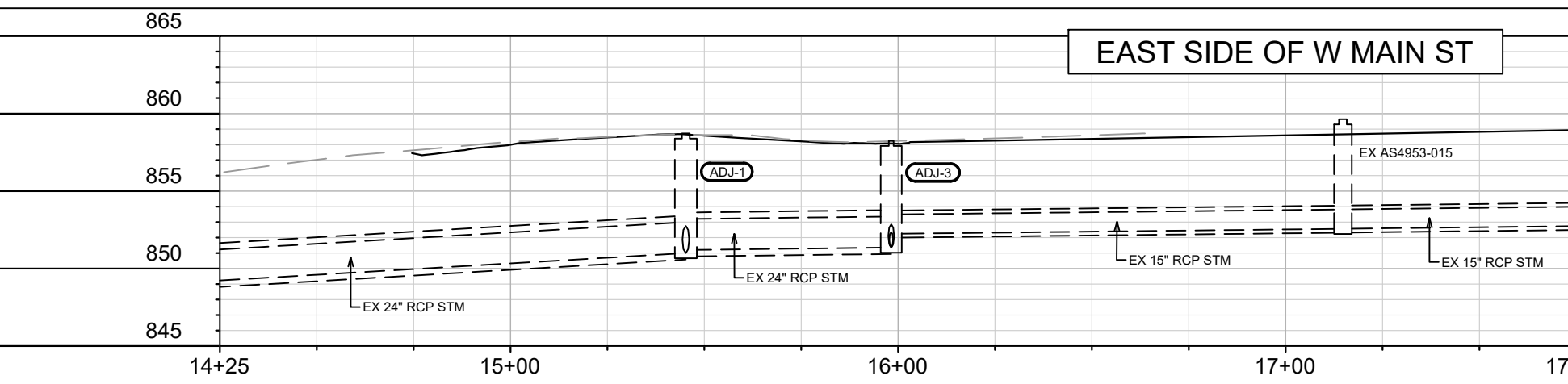
INLET PROTECTION SHALL BE INSTALLED WITHIN THE CONSTRUCTION LIMITS. ADDITIONAL INLET PROTECTION SHALL BE INSTALLED AS DIRECTED.

POLYMER SHALL BE APPLIED TO DISTURBED AREAS AS DIRECTED BY THE CONSTRUCTION ENGINEER.



STONE TRACKOUT CONTROL - AS NEEDED (STREET ENTRANCE BERM IS OK)

RIGID FRAME INLET PROTECTION (TYPICAL, FOR ALL INLETS ADJACENT TO ACTIVE DISTURBANCE)



MARK	REVISION	DATE	BY
13015		3/2/2023 3:38 PM	U-1

13015
 MADISON, WI
 CONTRACT NO: 8721
 W MAIN ST - SEWER PLAN & PROFILE & EROSION CONTROL
 W MAIN ST BIKE BOULEVARD
 M:\DESIGN\Projects\13015\CAD\Sewers\13015SWR-PfP.dwg



13015
 U-1

W MAIN ST BIKE BOULEVARD	SHEET NO.	U-2
PROJECT NO. 13015	U-2	
STORM SEWER SCHEDULE		
CITY OF MADISON		

STORM SEWER SCHEDULE

PROPOSED STORM STRUCTURES

STRUC. NO.	STATION	LOCATION (OFFSET)	TYPE	TOP OF CASTING	E.I.	DEPTH	NOTES
W MAIN ST							
* S-1	16+00.75	LT-18.06	H INLET	858.34	855.27	3.07	FP; W/SALVAGED CASTING

STORM STRUCTURE REMOVALS

STRUC. NO.	ID NO.	STATION	LOCATION (OFFSET)	TYPE	DEPTH (FT)	NOTES
W MAIN ST						
RS-1	IN4953-010	16+00.77	LT-18.56	INLET	2.99	SALVAGE CASTING

STORM STRUCTURE ADJUSTMENTS

STRUC. NO.	ID NO.	STATION	LOCATION (OFFSET)	TYPE	EX TOC	PROP TOC	RIM ADJ (FT)	NOTES
W MAIN ST								
ADJ-1	AS4953-001	15+45.23	RT-19.41	5'X7' CATCHBASIN	858.72	858.62	-0.10	[1]
ADJ-2	AS4953-009	15+46.06	LT-14.20	5'X7' CATCHBASIN	858.62	858.67	0.05	[1]
ADJ-3	IN4953-055	15+98.22	RT-18.33	4'X4' SAS-INLET	858.25	858.56	0.31	[2]; W/SALVAGED CASTING

ULO SCHEDULE

ID NO. (OFFSET)	STATION	LOCATION (OFFSET)	TYPE	NOTES
W MAIN ST				
ULO-1	15+98.30	LT-16.63	FO	
ULO-2	16+05.15	LT-16.47	FO	

SPECIFIC NOTES:

- [1] REPLACE ROOF & CASTING PER BID ITEM 90030; REPLACE CASTING WITH TWO R-1550-0054 CASTINGS
- [2] PAID AS BID ITEM 20501

STANDARD NOTES:

-PLAN LENGTH (PAY LENGTH) IS FROM CENTER OF STRUCTURE TO CENTER OF STRUCTURE. PIPE LENGTH IS ACTUAL LENGTH OF PIPE FROM STRUCTURE WALL TO STRUCTURE WALL. SLOPE CALCULATED USING PIPE LENGTH.

-ALL FIELD POURED SAS STORM STRUCTURES SHALL BE CONSTRUCTED IN ACCORDANCE WITH STANDARD DETAIL DRAWING 5.7.3. ALL PRECAST SAS STORM STRUCTURES SHALL BE CONSTRUCTED IN ACCORDANCE WITH STANDARD DETAIL DRAWING 5.7.5.

-ALL REBAR FOR FIELD POURED STRUCTURES SHALL BE EPOXY COATED. ANY EXPOSED STEEL SHALL BE TOUCHED UP OR RECOATE

- ABBREVIATIONS: AE = APRON ENDWALL; RCP = REINFORCED CONCRETE PIPE; HERCP = HORIZONTAL ELLIPTICAL REINFORCED CONCRETE PIPE; DNA = DOES NOT APPLY; SAS = SEWER ACCESS STRUCTURE; LP = LOW POINT INLET STRUCTURE; FP = FIELD POURED STRUCTURE; TR = TOP OF CONCRETE ROOF; NCM = NO CROWN MATCH FOR PIPES; UD = UNDERDRAIN

- APPROXIMATE DISCHARGE E.I. GIVEN, ADJUST E.I. AND PIPE SLOPE IN THE FIELD.

- TOP OF CASTING GRADE GIVEN IS THE TOP OF CURB FOR INLET STRUCTURES AND THE FLOWLINE OF THE CLOSED CASTING FOR SAS's.

- ALL REINFORCED CONCRETE PIPES TO BE CLASS III UNLESS OTHERWISE NOTED.

- SURVEYOR TO CONFIRM THAT ALL INLET STATION / OFFSETS LINE UP WITH PROPOSED CURB AND GUTTER.

- ALL STRUCTURES CALLED OUT AS FIELD POURED SHALL BE FIELD POURED. ALL OTHER STRUCTURES (NOT INDICATED AS FIELD POURED) SHALL BE SUBMITTED TO CITY ENGINEERING FOR APPROVAL IF PRECAST STRUCTURES ARE PREFERRED. CONTACT DANIEL OLIVARES OF CITY ENGINEERING AT (608) 261-9285 OR DAOLIVARES@CITYOFMADISON.COM. FOR PRECAST APPROVALS EMAIL SHOP DRAWINGS TO DAOLIVARES@CITYOFMADISON.COM.

GENERAL ELECTRICAL NOTES:

1. ALL LOCATIONS ARE APPROXIMATE, THE TRAFFIC ENGINEER SHALL APPROVE FINAL LOCATIONS, INCLUDING SETBACK, IN THE FIELD AFTER CONTRACTOR SURVEYS STAKING. THE CONTRACTOR SHALL NOTIFY JERRY SCHIPPA, (267-1969), CITY TRAFFIC ENGINEERING, AT LEAST 24-HOURS IN ADVANCE OF NEEDING CONDUIT, BASES, OR HANDHOLE LOCATIONS MARKED.
2. THE CONTRACTOR SHALL DO ALL WORK IN ACCORDANCE WITH "CITY OF MADISON STANDARD SPECIFICATIONS FOR PUBLIC WORKS CONSTRUCTION, 2023 EDITION" AND ALL ADDENDUMS THERETO.
3. ALL CONDUITS SHALL BE 2-INCH PVC, SCHEDULE 80 BENEATH PAVEMENT AND SCHEDULE 40 WHEN NOT PLACED BELOW PAVEMENT, UNLESS OTHERWISE NOTED.
4. THE CONTRACTOR SHALL CALL TROY VANT AT (395-1975) AT THE TRAFFIC ENGINEERING SHOP AT LEAST 24-HOURS IN ADVANCE OF PLACING CONCRETE BASES, INSTALLING HANDHOLES, OR BURYING CONDUIT TO ARRANGE FOR INSPECTION.
5. ANY WORK COMPLETED WITHOUT INSPECTION IS SUBJECT TO REJECTION.
6. EXISTING STREET LIGHTS SHALL BE IN SERVICE EACH AND EVERY NIGHT UNTIL NEW LIGHTING CAN BE OPERATED.
7. ALL CONDUIT SIZES ON PLANS ARE 2-INCH UNLESS OTHERWISE NOTED.
8. THE CONTRACTOR SHALL ARRANGE FOR PICKUP OF THE FOLLOWING CITY FURNISHED MATERIALS, WHICH SHOULD BE ARRANGED BY CALLING ED SMITH, TRAFFIC ENGINEERING SHOP (266-9034) AT LEAST 24-HOURS PRIOR TO NEEDING MATERIALS
 - 8.1. (16) $\frac{3}{4}$ " x 19" ANCHOR BOLTS FOR TYPE G BASES, 4 TOTAL
 - 8.2. (4) 1" x 40" ANCHOR BOLTS FOR LB-3 BASE, 1 TOTAL
 - 8.3. (16) $1\frac{1}{4}$ " x 48" ANCHOR BOLTS FOR LB-8 BASES, 4 TOTAL
 - 8.4. (6) W11-15(MOD) SIGNS
 - 8.5. (2) W16-7R SIGNS
 - 8.6. (2) W16-7L SIGNS



MADISON RECTANGULAR RAPID FLASHING BEACON POLES AND ARMS

STRUCTURE	SPV		SPV		SPV	
	BASE PEDESTAL (EACH)	STANDARD 3.5' ALUMINUM (EACH)	STANDARD 15' ALUMINUM (EACH)	7 GAUGE 20-FT (EACH)	SPV ARMS TROMBONE 22-FT (EACH)	SPV RECTANGULAR RAPID FLASHING BEACON (LUMP)
TS1	1	1	-	-	-	-
TS2	1	1	-	-	-	-
TS3	-	-	-	1	1	-
TS4	1	-	1	-	-	-
TS5	1	1	-	-	-	-
TS6	1	1	-	-	-	-
TS7	-	-	-	1	1	-
TS8	1	-	1	-	-	-
UNDISTRIBUTED	-	-	-	-	-	1
TOTAL:	6	4	2	2	2	1

RECTANGULAR RAPID FLASHING BEACON BASES

DESCRIPTION	RECTANGULAR RAPID FLASHING BEACON BASES				COMMENTS
	60421 STREET LIGHT BASE REMOVAL (EACH)	60411 TYPE G BASE (EACH)	60403 LB-3 BASE (EACH)	60407.0000 LB-8 BASE (EACH)	
TS1	-	1	-	-	
TS2	-	1	-	-	
TS3	-	-	-	1	
TS4	-	-	-	1	
TS5	-	1	-	-	
TS6	-	1	-	-	
TS7	-	-	-	1	
TS8	-	-	-	1	
SL758	-	-	-	-	MAINTAIN EX.
SL759	1	-	1	-	REPLACE EX.
TOTALS:	1	4	1	4	

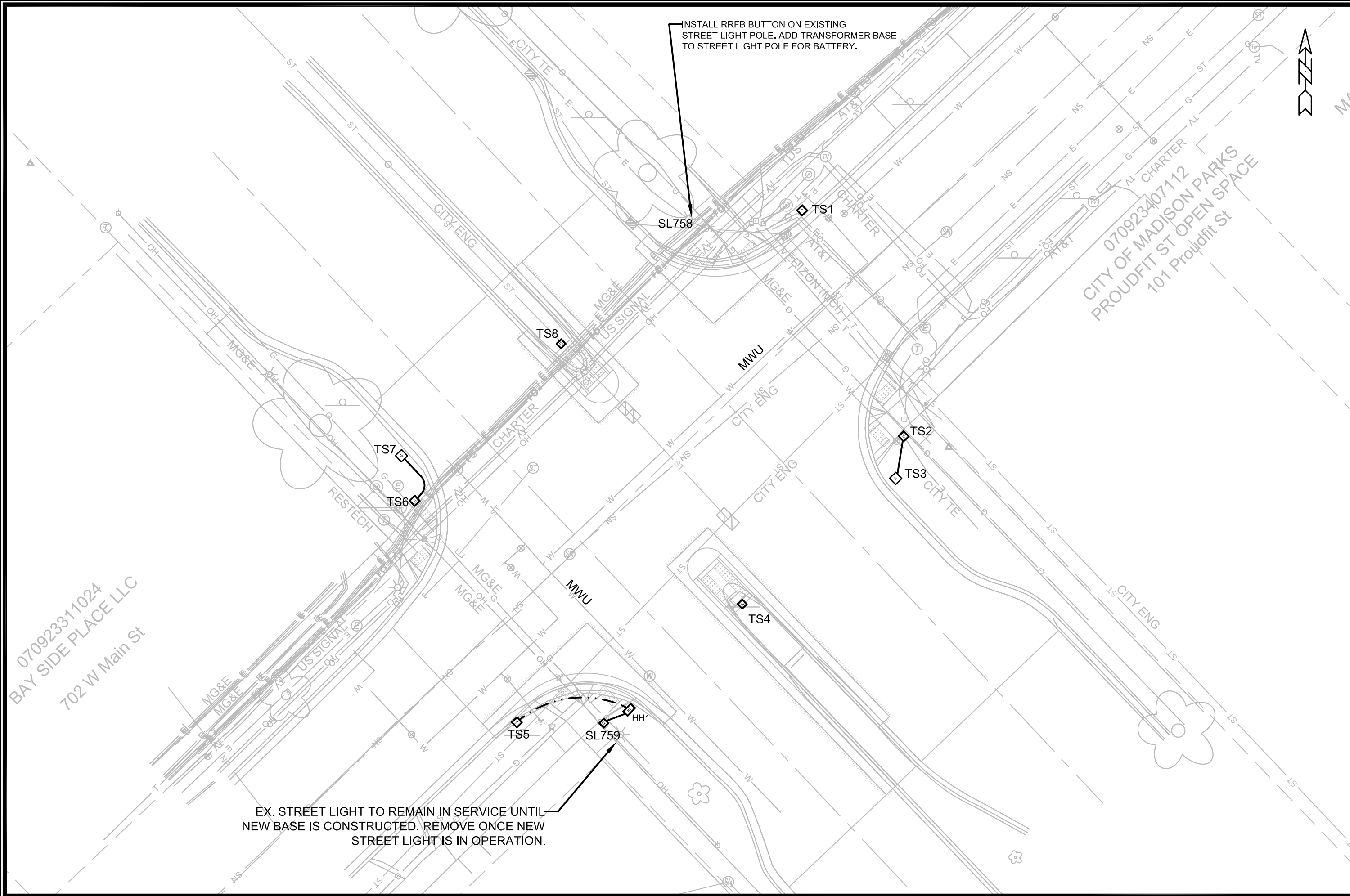
TRAFFIC SIGNAL CONDUITS

FURNISH & INST ALL				
From	To	SCHEDULE 40 CONDUIT		Comments
		2" (LF)	ELECTRICAL TRENCH (LF)	
TS2	TS3	10	10	
TS5	HH1	26	26	
HH1	SL759	6	6	
TS6	TS7	12	12	
TOTAL:		54	54	

13015	MADISON, WI	13015	MADISON, WI	13015	MADISON, WI	13015	MADISON, WI	13015	MADISON, WI
ELECTRICAL PLANS					WEST MAIN STREET TAP				
13015					8721				
E-1					CONTRACT NO:				



13015
E-1

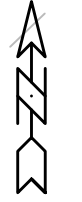



INSTALL RRFB BUTTON ON EXISTING STREET LIGHT POLE. ADD TRANSFORMER BASE TO STREET LIGHT POLE FOR BATTERY.

EX. STREET LIGHT TO REMAIN IN SERVICE UNTIL NEW BASE IS CONSTRUCTED. REMOVE ONCE NEW STREET LIGHT IS IN OPERATION.

070923311024
BAY SIDE PLACE LLC
702 W Main St

070923407112
CITY OF MADISON PARKS
PROUDFIT ST OPEN SPACE
101 Proudfit St

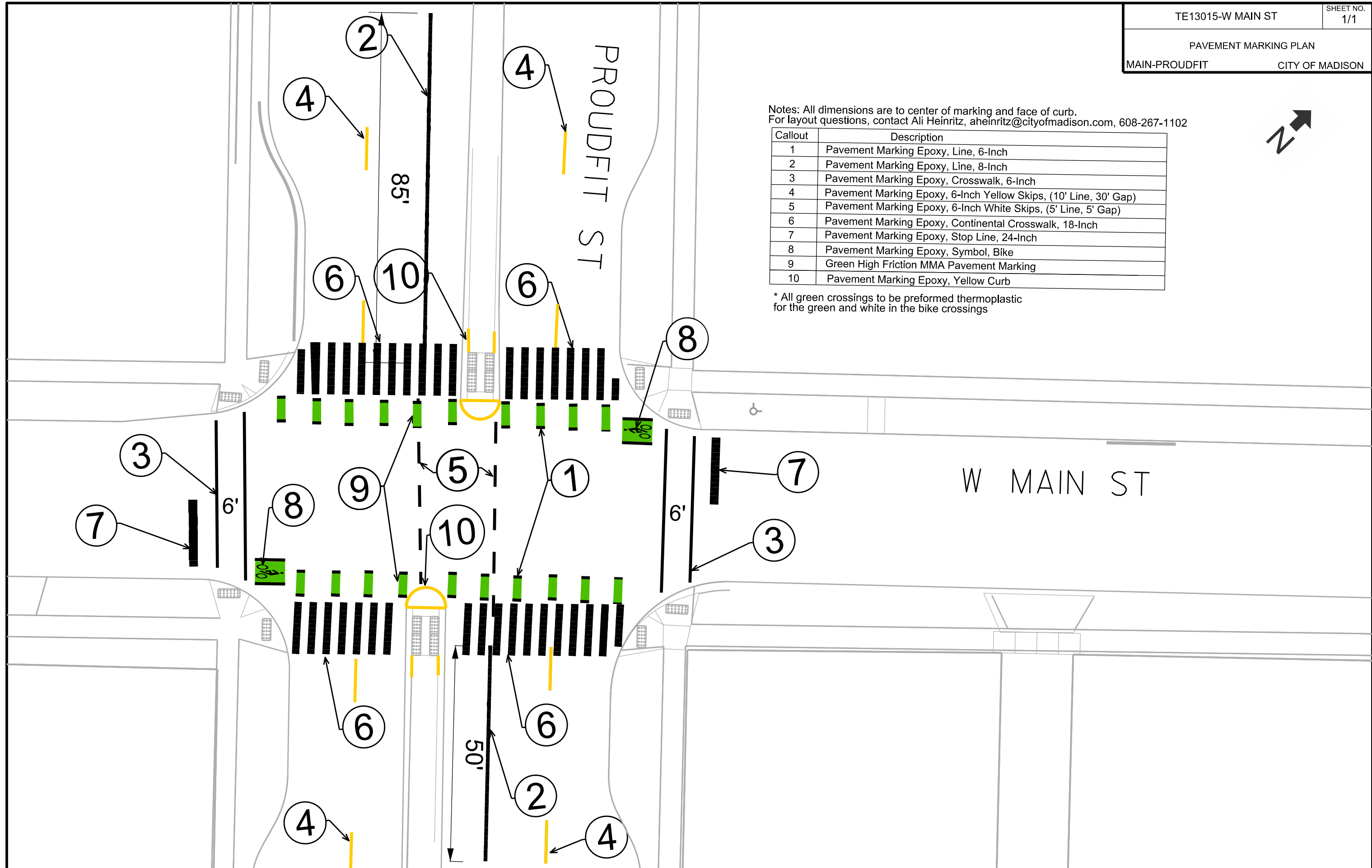


ELECTRICAL PLANS		13015	E-2
WEST MAIN STREET TAP		MADISON, WI	
M:\DESIGN\Projects\13015\CAD\Traffic\13015TE-Electrical_JLS.dwg		CONTRACT NO: 8721	
		13015	
		DATE: 11-20	
		REVISION	
		MARK	
		DESIGNED BY: JLS	
		DATE: 3/7/2023 8:13 AM	
		Scale: 1" = 20'	

Notes: All dimensions are to center of marking and face of curb.
For layout questions, contact Ali Heinritz, aheinritz@cityofmadison.com, 608-267-1102

Callout	Description
1	Pavement Marking Epoxy, Line, 6-Inch
2	Pavement Marking Epoxy, Line, 8-Inch
3	Pavement Marking Epoxy, Crosswalk, 6-Inch
4	Pavement Marking Epoxy, 6-Inch Yellow Skips, (10' Line, 30' Gap)
5	Pavement Marking Epoxy, 6-Inch White Skips, (5' Line, 5' Gap)
6	Pavement Marking Epoxy, Continental Crosswalk, 18-Inch
7	Pavement Marking Epoxy, Stop Line, 24-Inch
8	Pavement Marking Epoxy, Symbol, Bike
9	Green High Friction MMA Pavement Marking
10	Pavement Marking Epoxy, Yellow Curb

* All green crossings to be preformed thermoplastic for the green and white in the bike crossings



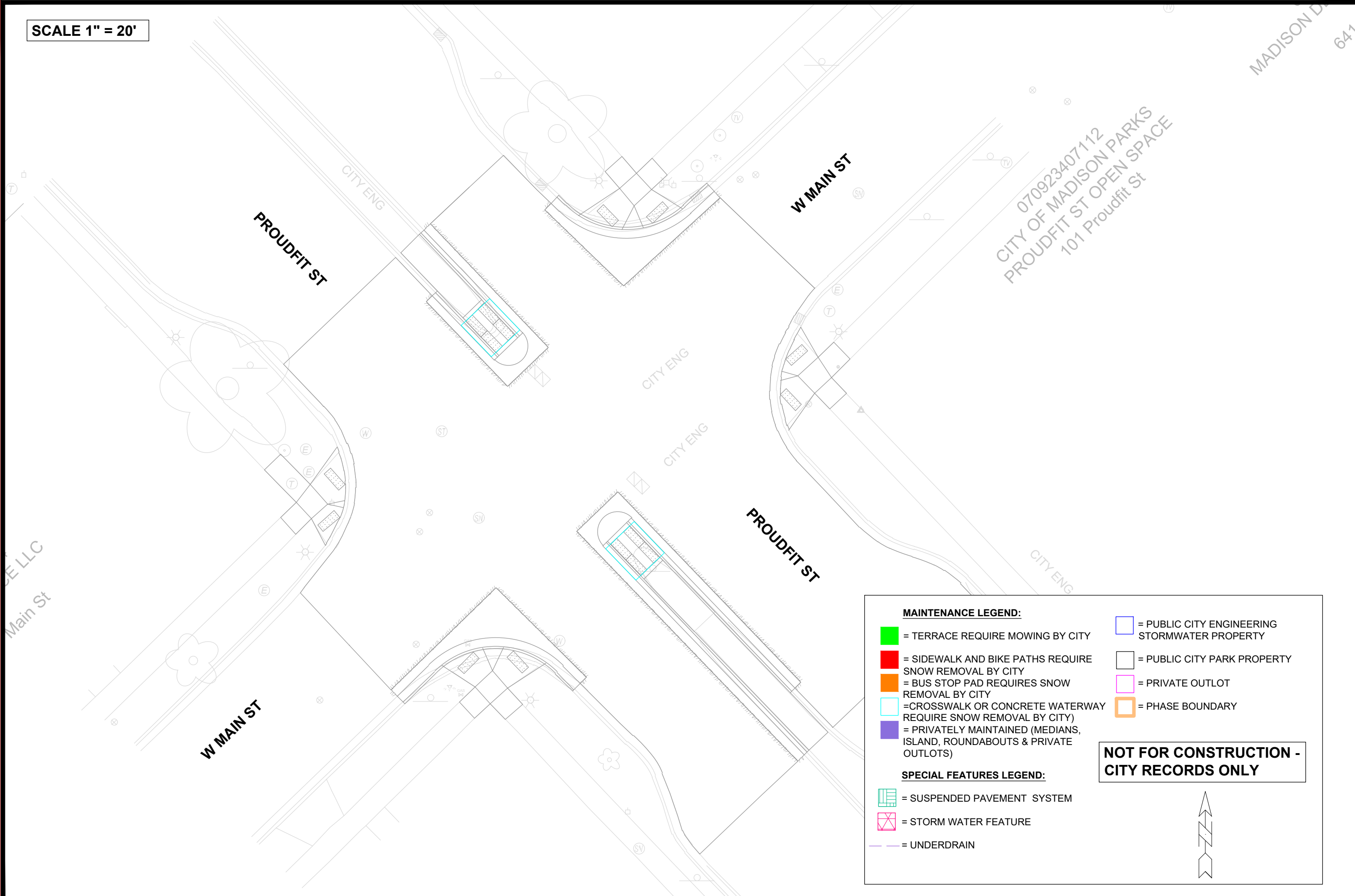
PLOT SCALE:

PLOT NAME:

REV. DATE:

ORIGINATOR: CITY OF MADISON, TRAFFIC ENG. DIV.

SCALE 1" = 20'



070923407112
CITY OF MADISON PARKS
PROUDFIT ST OPEN SPACE
101 Proudfit St

MAINTENANCE LEGEND:

- = TERRACE REQUIRE MOWING BY CITY
- = SIDEWALK AND BIKE PATHS REQUIRE SNOW REMOVAL BY CITY
- = BUS STOP PAD REQUIRES SNOW REMOVAL BY CITY
- = CROSSWALK OR CONCRETE WATERWAY REQUIRE SNOW REMOVAL BY CITY
- = PRIVATELY MAINTAINED (MEDIANS, ISLAND, ROUNDABOUTS & PRIVATE OUTLOTS)
- = PUBLIC CITY ENGINEERING STORMWATER PROPERTY
- = PUBLIC CITY PARK PROPERTY
- = PRIVATE OUTLOT
- = PHASE BOUNDARY

SPECIAL FEATURES LEGEND:

- = SUSPENDED PAVEMENT SYSTEM
- = STORM WATER FEATURE
- = UNDERDRAIN

NOT FOR CONSTRUCTION - CITY RECORDS ONLY



MARK	REVISION	DATE	BY

13015
MADISON, WI
CONTRACT NO: 8721

MAINTENANCE MAP
W MAIN ST BIKE BOULEVARD
M:\DESIGN\Projects\13015\CAD\Streets\13015EN-Maintenance.dwg



13015
MN-1